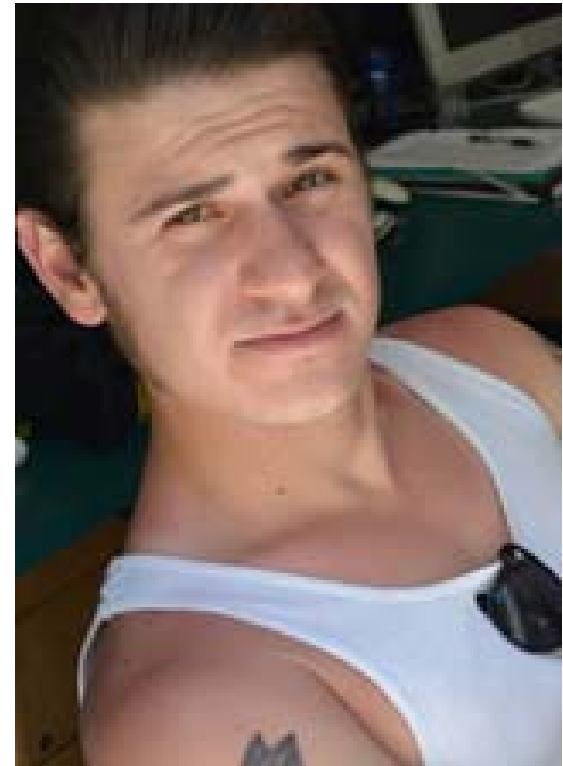
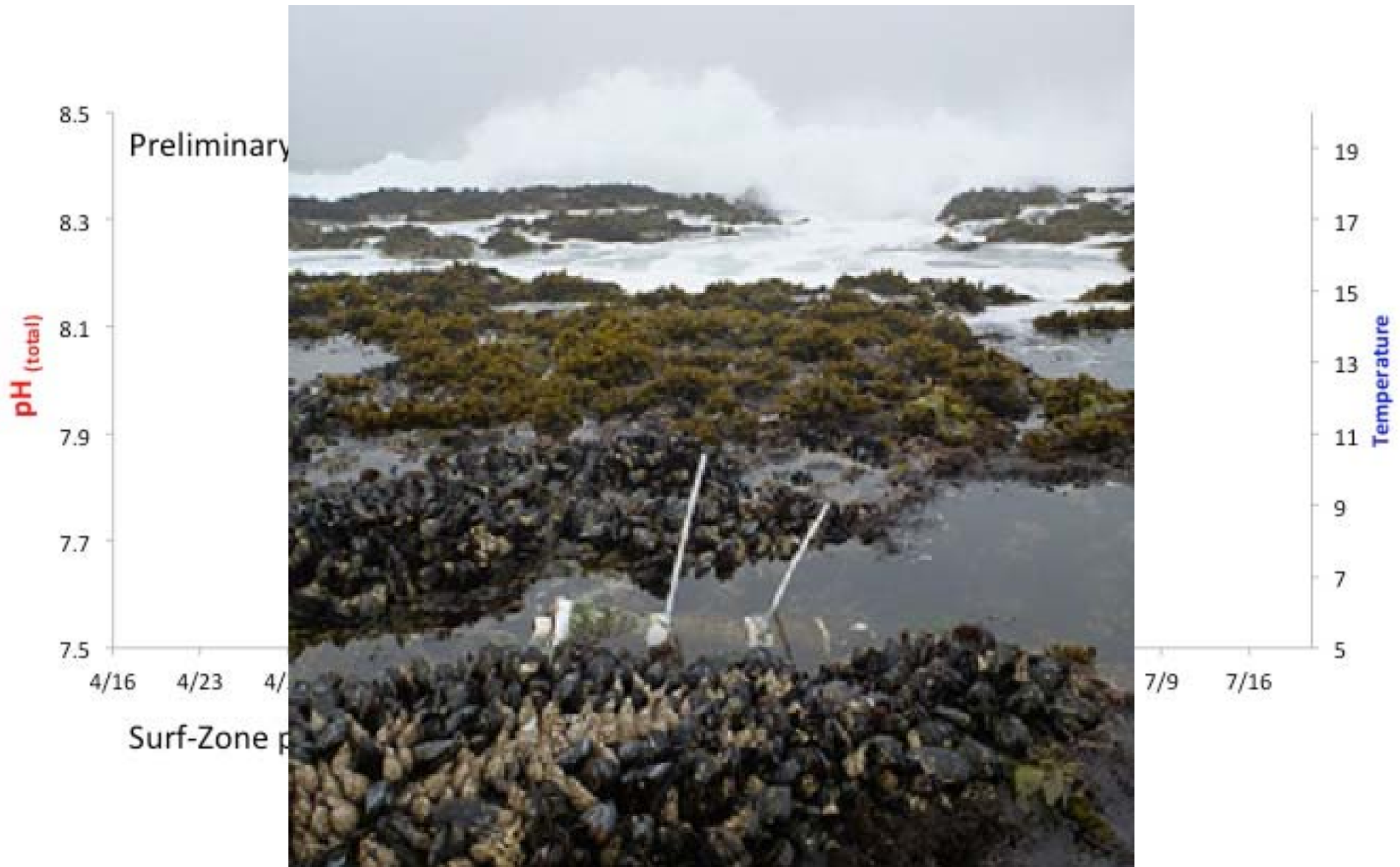


# Interactive effects of pH and T variability...on porcelain crabs

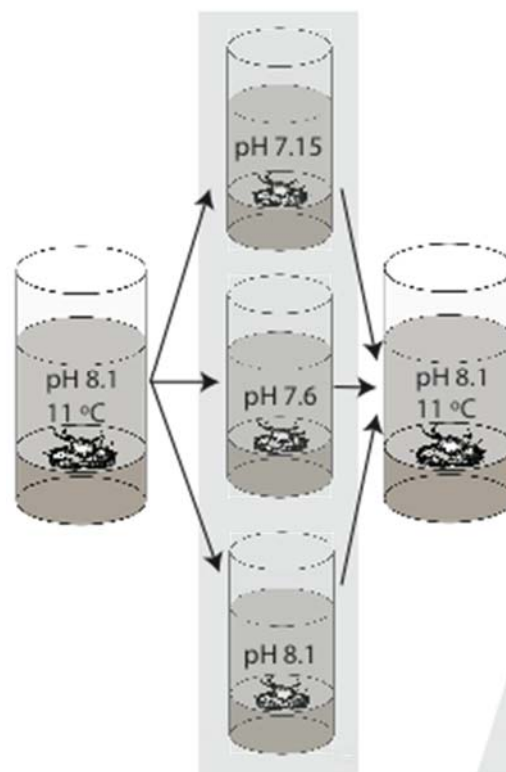
*Adam Paganini & Jonathon Stillman  
(#20)*



# Intertidal habitats are pH and T variable



[http://omegas.science.oregonstate.edu/?q=prelim\\_data\\_OR-NCA](http://omegas.science.oregonstate.edu/?q=prelim_data_OR-NCA)



C

# Questions - Assays

- Metabolic Demands? –  $\dot{V}O_2$
- Sensitivity? –  $Q_{10}$
- Limits? -  $CT_{\max}$

*Poster #20*

\* Bonus – ask me about our coccolithophore studies!